



The Reel west newsletter



I started early today so I could get to Branson before noon. Lebanon's library has a Route 66 Museum with some displays that I was interested in.

Day 4

Monday

April 4th

Lebanon, MO

To

Mt Vernon, Missouri

Stats

475 miles

475 total miles this trip

Just over 9 hours on the road

Weather

High Temp: 78

Low Temp: TBD

Conditions: Fantastic



I only spent about 20 minutes in the museum. It was small, and all these Route 66 museums seem to have a lot of display cases with smaller items, photos with captions, plaques, etc. My main interests were the full sized diner, tourist cabin and gas station displays shown below.



All that's left of Red's, a famed hamburger joint on Route 66 in Springfield, MO



TOURIST CABIN 1940S ERA

EXAMPLE OF A TYPICAL CABIN, OFTEN FOUND IN "COURTS" ALONG ROUTE 66. GRADUALLY MODERNIZED OVER THE YEARS, THIS EXAMPLE OFFERS INDOOR PLUMBING, STEAM HEAT, TELEPHONE, AND A RADIO.



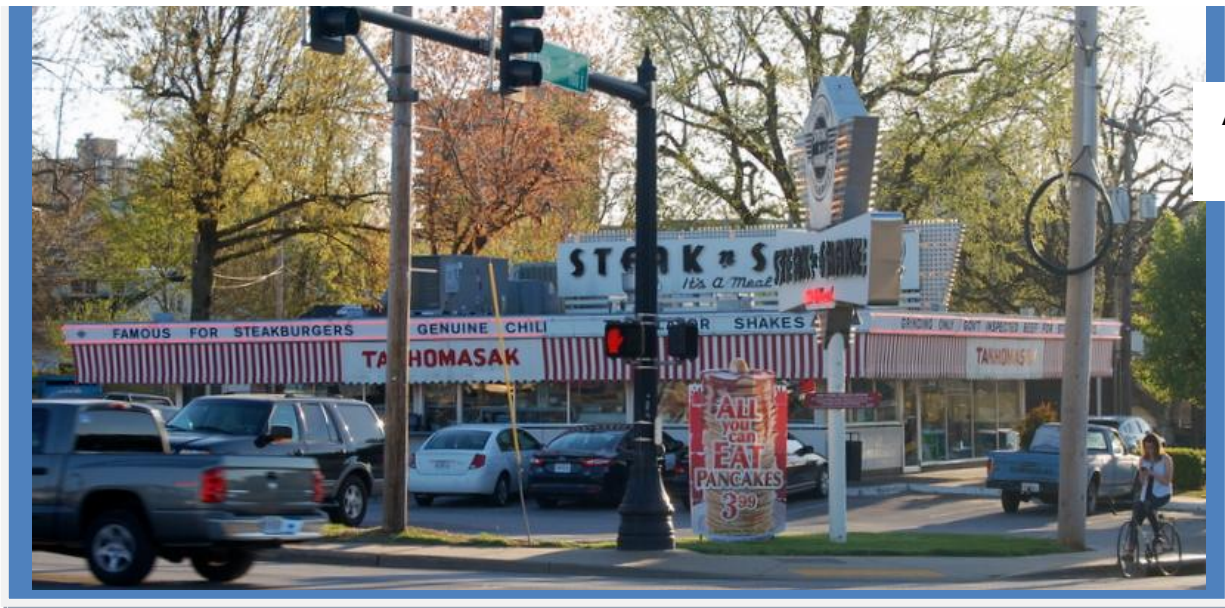


Jim and I had a beautiful day to play 18 holes, have dinner at the clubhouse and talk about a lot of things. It was a very enjoyable visit. I'm glad I stopped by.



I parted with Jim about 5:45 and headed back to Springfield to continue my journey. Left is the Best Western Route 66 Rail Haven Motel. The Motel opened in 1938 and still has the remnants of the split rail fence it was named after, in the shadow of the sign. I really cannot believe the stupidity of city officials to put a lamp post right in front of a neon sign. Leave it to the government to screw things up.

I was headed directly into the setting sun as I drove through Springfield, making it hard to see anything ahead, even stoplights. Downtown Springfield seems like a real happenin' place. A lot of cafés and restaurants with outdoor seating that was mostly full, people all over the place and I am not talking homeless. Seems to be an interesting city to spend a few days in.



A classic Steak & Shake

SCAVENGER HUNT: Who did "Wild Bill" Hickok shoot here in the Park Central Square in the 1860's?

The answer? Dave Tutt



Jerry did not even mention this park in the EZ Guide and I almost missed it because of the sun. There was this sign, a re-creation of a Portland cement roadway complete with curbs and the Hamburg sign on page 1.

Across the street (below) is this series of tile mosaics that runs for almost a ¼ mile.



There were several roadside remnants as I drove west out of Springfield.



What used to be the Rock Fountain Court below is now a well-kept half-circle of apartments.



West of Springfield Route 66 winds through pastoral settings of rolling wooded hills and green fields, peppered with churches, barns and roadside remnants. I passed through Halltown and into Paris Springs, where Gary Turner has built the gas station replica below, complete with vintage cars and trucks, on the site of a long-gone gas station.

I took a wrong turn again after Paris Springs, the sun was in my eyes, and when I finally realized it, it was getting dark. So I decided to find a hotel for the night and backtrack in the morning.



Tomorrow I will leave Missouri for Kansas and Oklahoma.

Good night,

Mark