



First RV Trip - Fall 2018



Allen Street was a little empty this morning

Day 17

Thursday

October 12th

Tombstone

Arizona

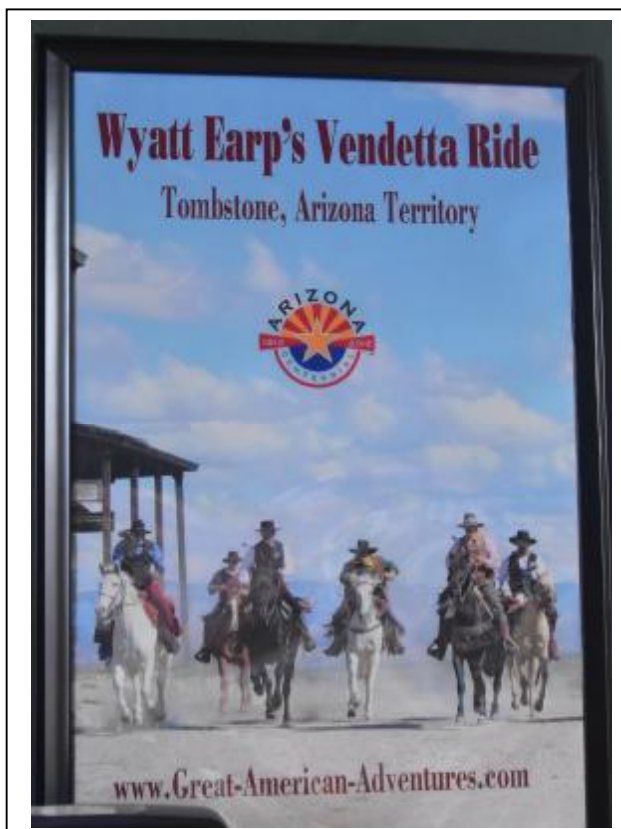
Weather

60's

Cloudy and rainy

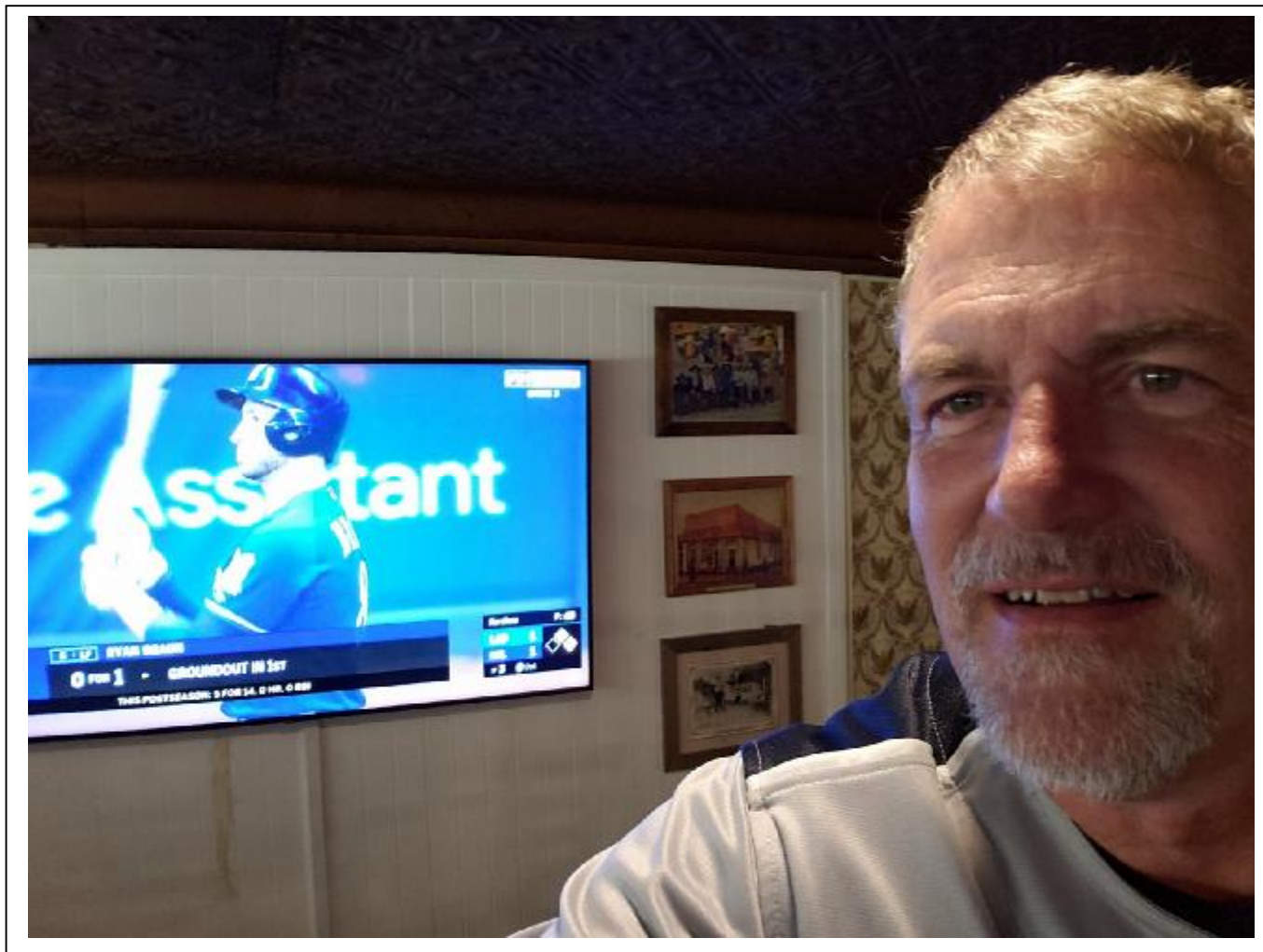
Hello to Family & Friends

Spending the day exploring Tombstone, taking tours, watching shows, etc.



The photo to the left is the GAA poster for the Vendetta Ride about 7-8 years ago. This poster was in the visitor's center.

It has also been in magazines. Third from the left is Steve Shaw who owns, operates and plans all of the GAA horseback riding adventures I partake in.

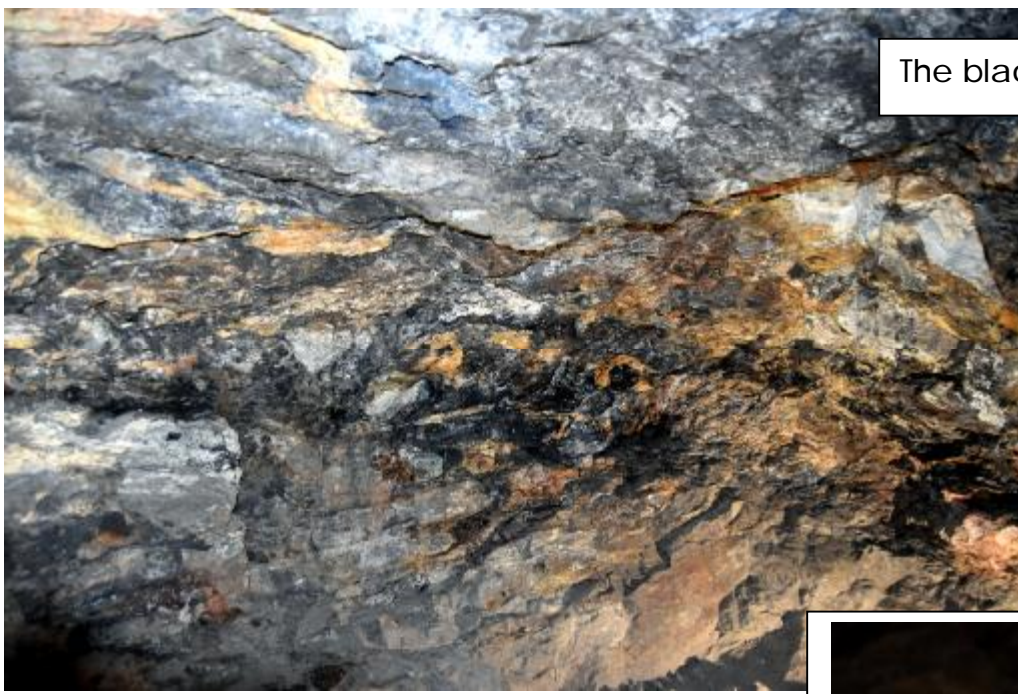


It's just one of those things.... Wore my Brewer jersey all day and went to the Crystal Palace to watch the Brewer game. It was 5-1 in the 7th when I decided to head back to the RV. I had purchased some additional cowboy clothing and when I got back I put the game on my phone then took the Brewer shirt off to try out some new shirts. The Dodgers started making their comeback. Jeffress was down to a full count with bases loaded and 2 outs. I suddenly realized I was not wearing the Brewer jersey. I quickly put it on and Jeffress struck out Puig (whatever), then went on to win the game. I will try and make sure I wear the jersey for each game.

Fun day. Lots of exercise.

Free burgers from George Webb!!!! Morgan was not even born the last time George Webb gave away free burgers in the spring of 198, and Kali had just turned 1.

Goodnight



The black rock is the silver ore

Very interesting mine tour. Our guide, Robert, was extremely knowledgeable and had been in this mine for 16 years.





Left is the first entrance that Ed Scheifflien made to start mining this claim.

Below: The tunnels run through the rock like holes in Swiss cheese. They followed the veins of silver wherever they went.





THE MINES OF TOMBSTONE

HISTORIC LOCATION

Tombstone was a mining town. Everything that happened here happened because of the lure of the silver and gold found by Ed Schieffelin in the hills of Tombstone in 1877. And so they came, the prospectors, laborers, miners, lawmen, "shady ladies", gamblers and those who hoped to prosper from the ones that "struck it rich". Thirty nine million dollars in ore were extracted from the mines in the 1880's until the 1930's. The area was enormously rich in silver and gold and much of the ore was close to the surface. This made early mining ventures easy if you consider that the labor was supplied by the backs of young strong men and the major tool for excavation was a shovel. But the lack of a plentiful water supply was a problem. Mills were built on the San Pedro River, 10 miles from Tombstone. Ore was hauled in wagons pulled by 20 team horses or mules over steep and rugged terrain. The water problem seemed to be solved when water was struck in the Sulphur Mine at 520 feet. But the water that seemed a savior proved to be the mines executioner. The same water table was soon encountered in all the other mines. In 1883, gigantic Cornish style pumps were installed to pump the water from the mines at the Contention and the Grand Central Mines. In 1886, the pumps at the Grand Central burned leaving only the pumps at the Contention to handle all the water. They proved inadequate, forcing the suspension of all mining below the water table. From 1898-1901 mining was at low ebb. In 1901 the Consolidated Mining Company was formed, a four compartment shaft was sunk and mills were built. The Contention, Empire, Lucky Cross, Silver Thread, Toughnut, West Side and Grand Central were reconditioned. By 1906 the Boom shaft had reached 1003 ft. level and water was being pumped at the rate of 3000 gallons per minute. Approximately 3,700,000 gallons were pumped on a daily basis. In 1909 water again dealt mining a serious blow. Defective fuel for the boilers caused the pumps on the 1000 ft. level to seize and stop. Sinking pumps failed to handle the water and the overtaxed boilers ruptured, stopping all pumping. New compressors and boilers solved the problem. But the cost of defeating the water coupled with the falling price of silver and insufficient high quality ore bodies made mining economically unfeasible. In 1911, all pumping was stopped and the 600, 700, 800, and 1000 foot levels of the Boom shaft were allowed to flood. This was the last hurrah for mining in Tombstone. While mining continued for a number of years it never reached the production levels of the early years.

2007

1880

CAMPBELL & HATCH
BILLIARDS



Courtesy of the Arizona Historical Society/Tucson #12347

HISTORIC LOCATION
18

CAMPBELL & HATCH
SALOON AND
BILLIARD PARLOR
1881

Bob Hatch and John Campbell opened a billiard parlor in 1880. Bob Hatch was a colorful character and an amateur thespian. It was said he kept a jar of frogs on the counter as their croaking helped him predict the weather. He followed the Earps to the famous gunfight, assisted in removing the gun from dying Billy Clanton's hand, and testified at the hearing. A few months later, he was playing a game of billiards with Morgan Earp when the back window was shattered by a gunshot and Morgan fell, mortally wounded, and died within the hour. Hatch ran for sheriff in 1885, but was defeated by John Slaughter. Campbell ran several saloons in Tombstone and served as a city councilman for a number of years. The saloon and billiard parlor burned in the 1882 fire and was one of the first to rebuild. Prohibition closed all the saloons in 1914. This area deteriorated badly in the following years. In 1945 this old building was remodeled for a new business. This is one of Tombstone's historic buildings.

2009



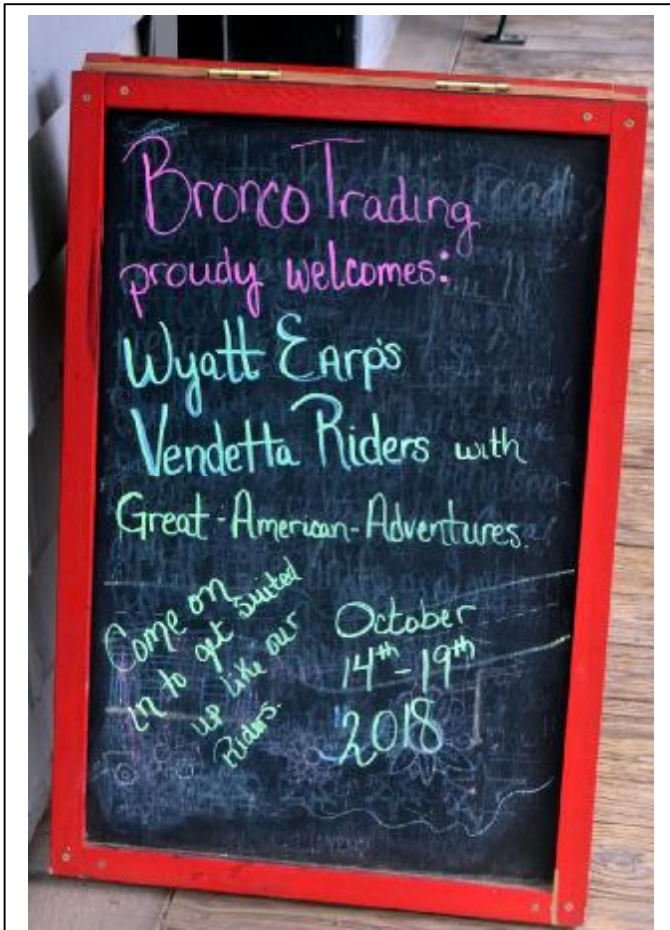


33
 CURLY BILL
 BROCIUS KILLED
 MARSHAL FRED
 WHITE HERE ON
 OCTOBER 28TH,
 1880
 TRC 2005

22
 "BUCKSKIN"
 FRANK LESLIE
 KILLED BILLY
 CLAIBORNE HERE
 ON NOVEMBER
 4TH,
 1882
 TRC 2005

26
 LUKE SHORT
 KILLED
 CHARLIE STORMS
 HERE ON
 FEBRUARY 25TH,
 1881
 TRC 2005

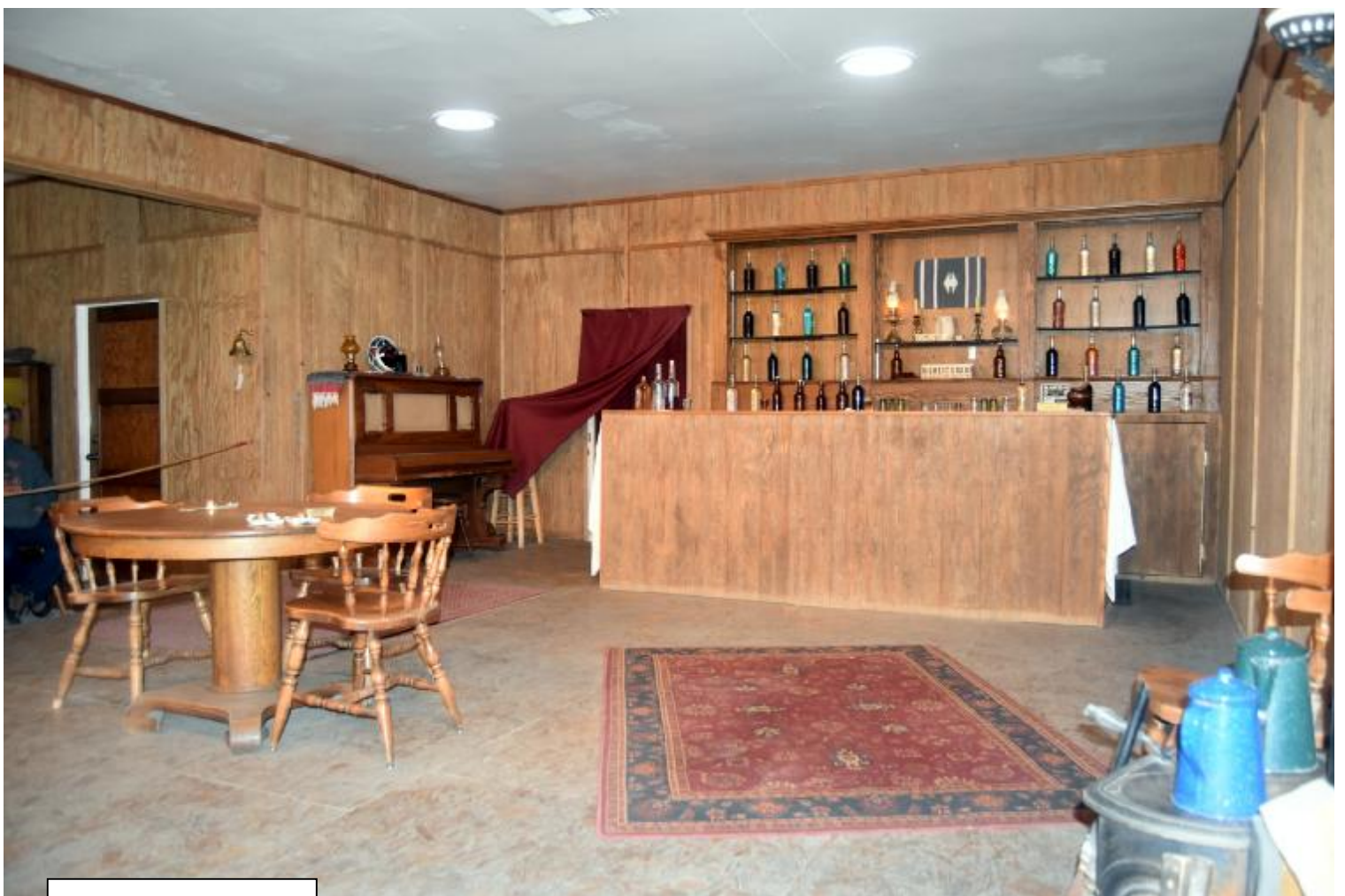
Perfect timing on this shot.







My next stop was The Gunfight Palace show. Four cowboys played out 3 famous saloon gunfight scenes.



The stage is set



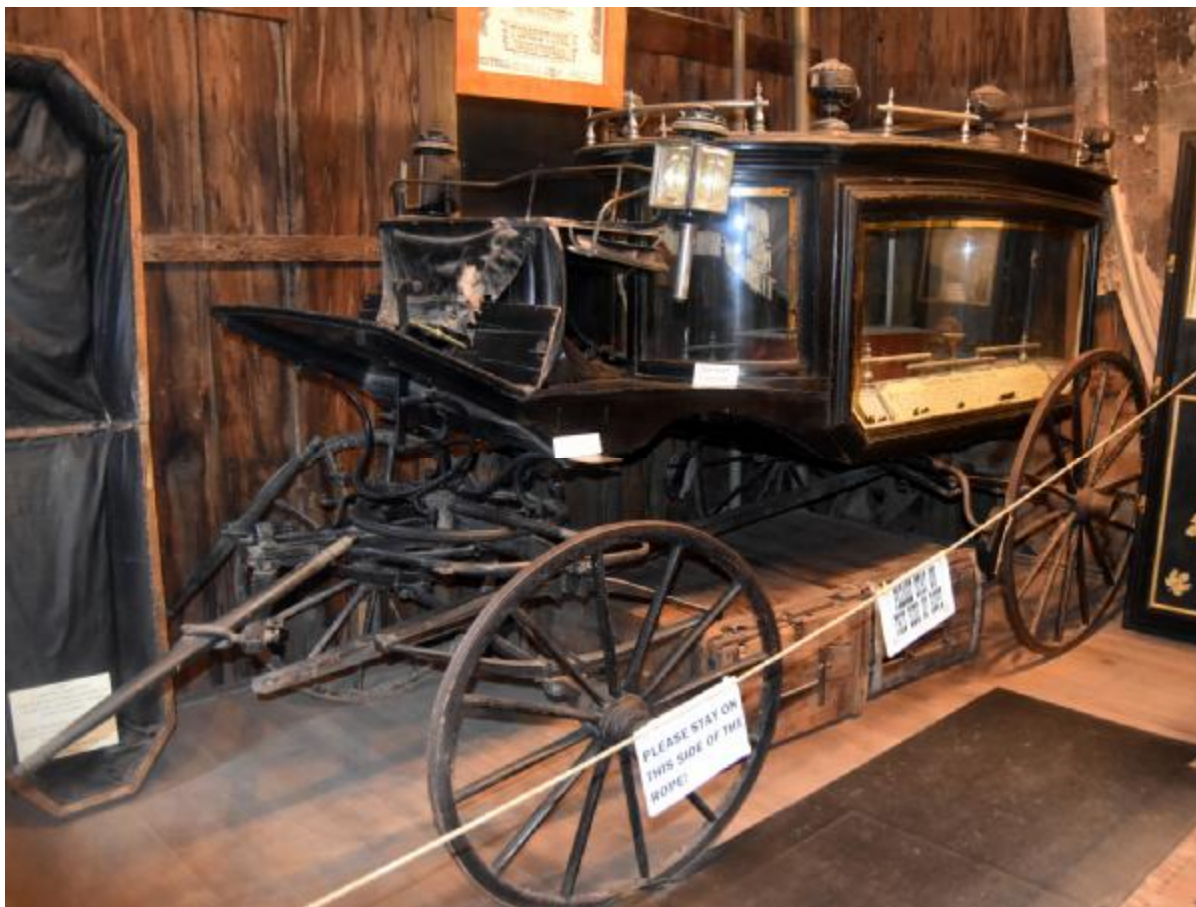
This is a painting of what the saloon may have looked like in its heyday. Note the “girls” on the catwalk above. Below is the actual catwalk.



Back stage



THE BLACK MORIAH
THIS ORIGINAL BOOTHILL HEARSE IS
TRIMMED IN 24 CARROT GOLD AND
STERLING SILVER.





THE ORIGINAL GRAND
PIANO HAS SAT ON THIS
SPOT SINCE 1881. IT
FURNISHED MUSIC FOR
THE SHOWS AND DANCES
OF THE BIRD CAGE THEATRE.
IT IS BUILT OUT OF SOLID
ROSE WOOD AND IS HAND
GRAVED. THIS PIANO WAS
THE FIRST TO ARRIVE IN
TOMBSTONE. IT WAS
SHIPPED AROUND THE
HORN OF SOUTH AMERICA
TO SAN FRANCISCO BY
BOAT AND BROUGHT FROM
THERE TO TOMBSTONE BY
MULE TRAIN. IT WAS PART
OF A FIVE PIECE BAND
THAT PLAYED THE BIRD
CAGE THEATRE FROM
1881 THROUGH 1889.

THE ORIGINAL GRAND
PIANO HAS SAT ON THIS
SPOT SINCE 1881 IT
FURNISHED MUSIC FOR
THE SHOWS AND DANCES,
IT IS BUILT OUT OF SOLID
ROSE WOOD AND IS HAND
GRAVED. THIS PIANO WAS
THE FIRST TO ARRIVE IN
TOMBSTONE. IT WAS
SHIPPED AROUND THE
HORN OF SOUTH AMERICA
TO SAN FRANCISCO BY
BOAT AND BROUGHT FROM
THERE TO TOMBSTONE BY
MULE TRAIN. IT WAS PART
OF A FIVE PIECE BAND
THAT PLAYED THE BIRD
CAGE THEATRE FROM
1881 THROUGH 1889.



NOTICE TO FEMALE EMPLOYEES

ALL GIRLS MUST TURN IN THE HOUSE'S SHARE
OF NIGHTLY RECEIPTS TO THE MADAME AND
MUST CASH IN ALL BAR-TOKENS WITH THE
HEAD BARTENDER BEFORE GOING OFF
DUTY !

THE MANAGEMENT

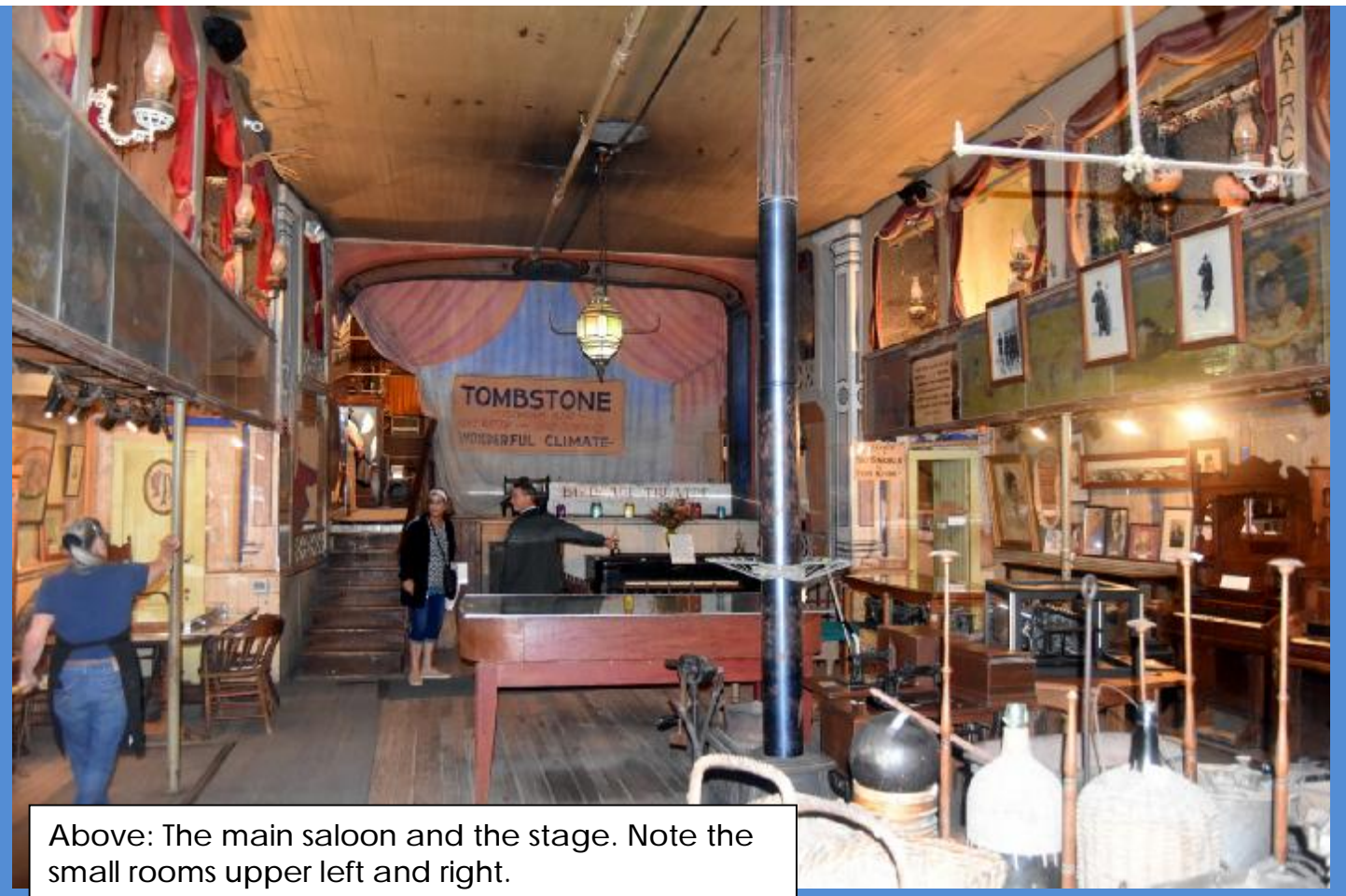
This original notice was found in the basement during the cleanup.
It had been posted on the walls for all to see.
Copies of this notice may be purchased in the gift shop.

THIS IS THE ORIGINAL FARO TABLE
WERE DOC HOLLIDAY PLAYED AND
DEALT FARO. DOC HOLLIDAY AND
JOHNNY RINGO HAD THEIR FAMOUS
DUEL BETWEEN THE FARO TABLE
AND THE GRAND PIANO.



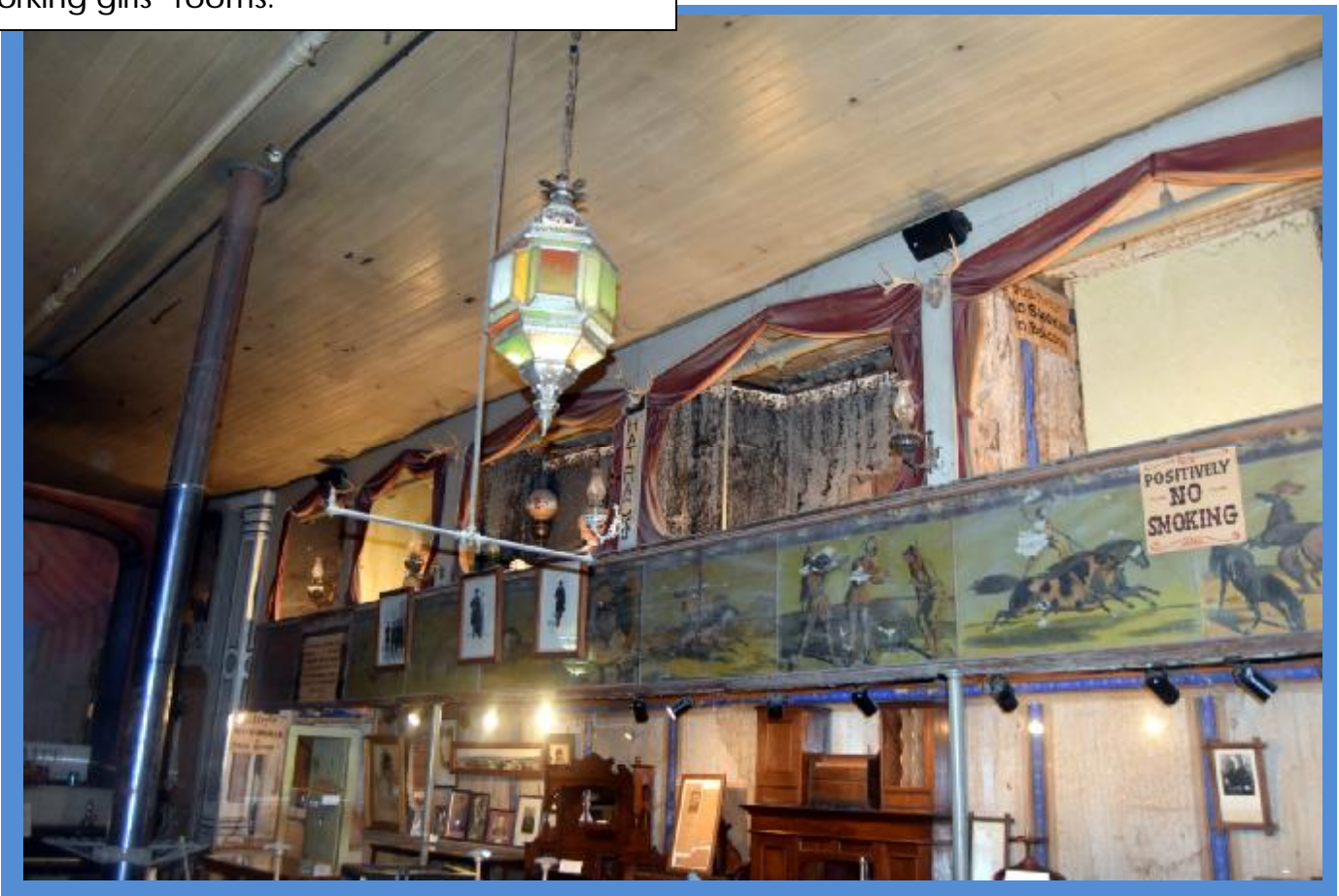
❁ **CURLY BILL** ❁
WAS RECOGNIZED WHILE GETTING
A HAIRCUT IN THIS CHAIR. HE WAS
LATER TRACKED DOWN AND KILLED
BY WYATT EARP





Above: The main saloon and the stage. Note the small rooms upper left and right.

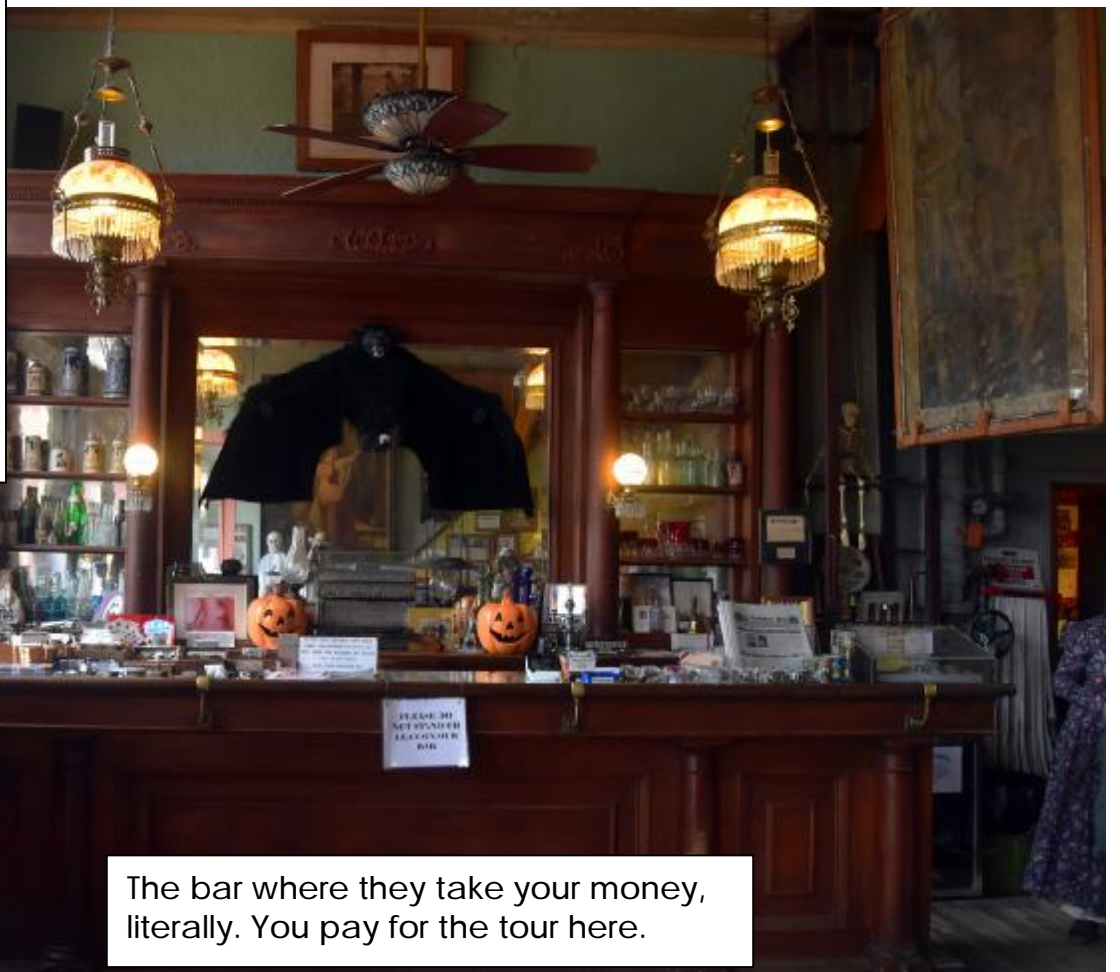
Below and further below: The "bird cages" from whence the business gets its name. These were the "working girls" rooms.



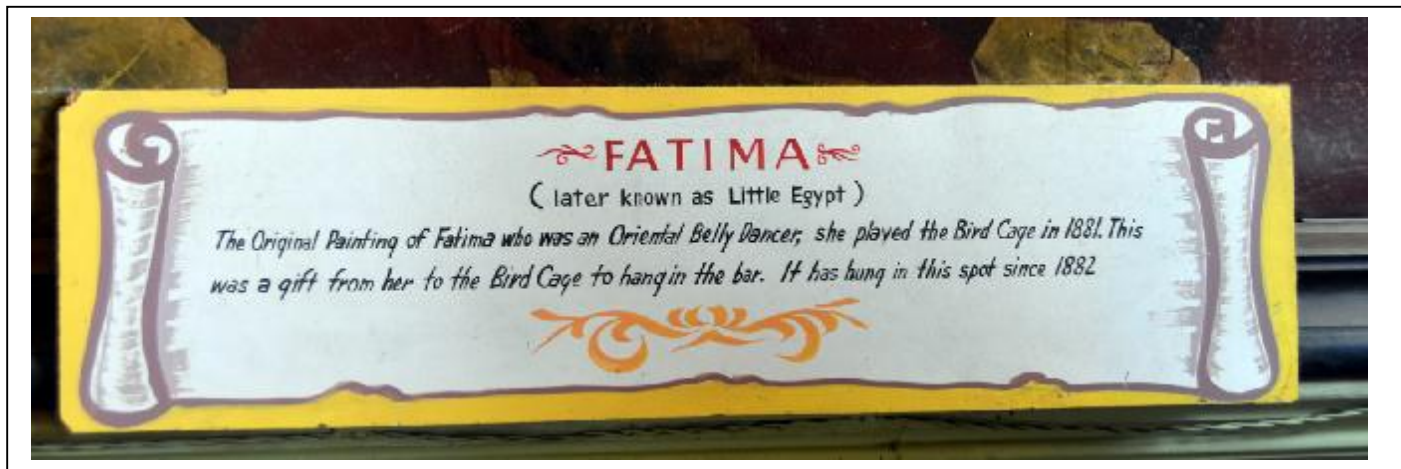
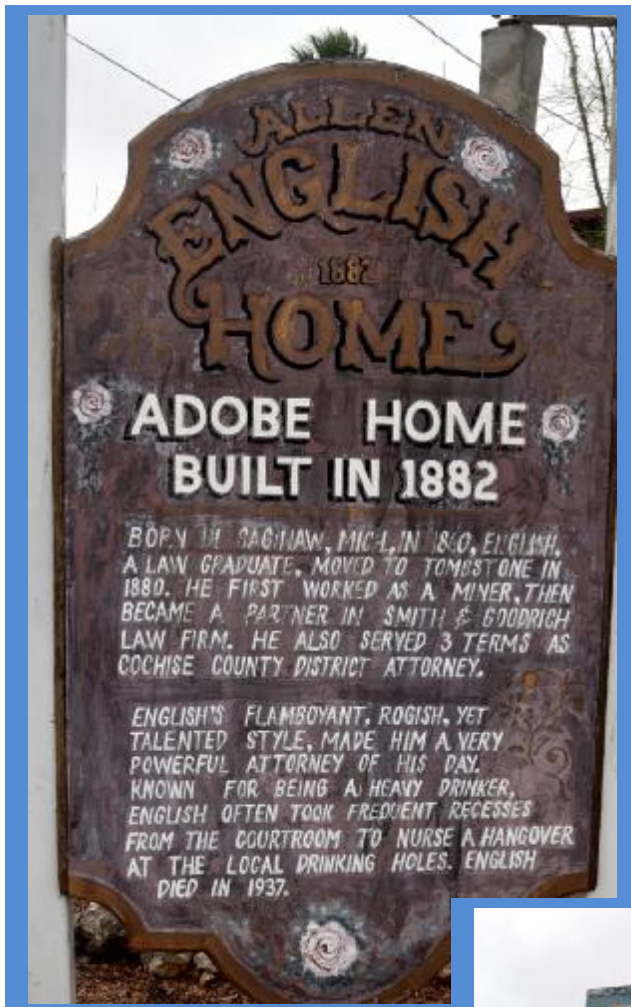
The Fatima painting is on the far wall

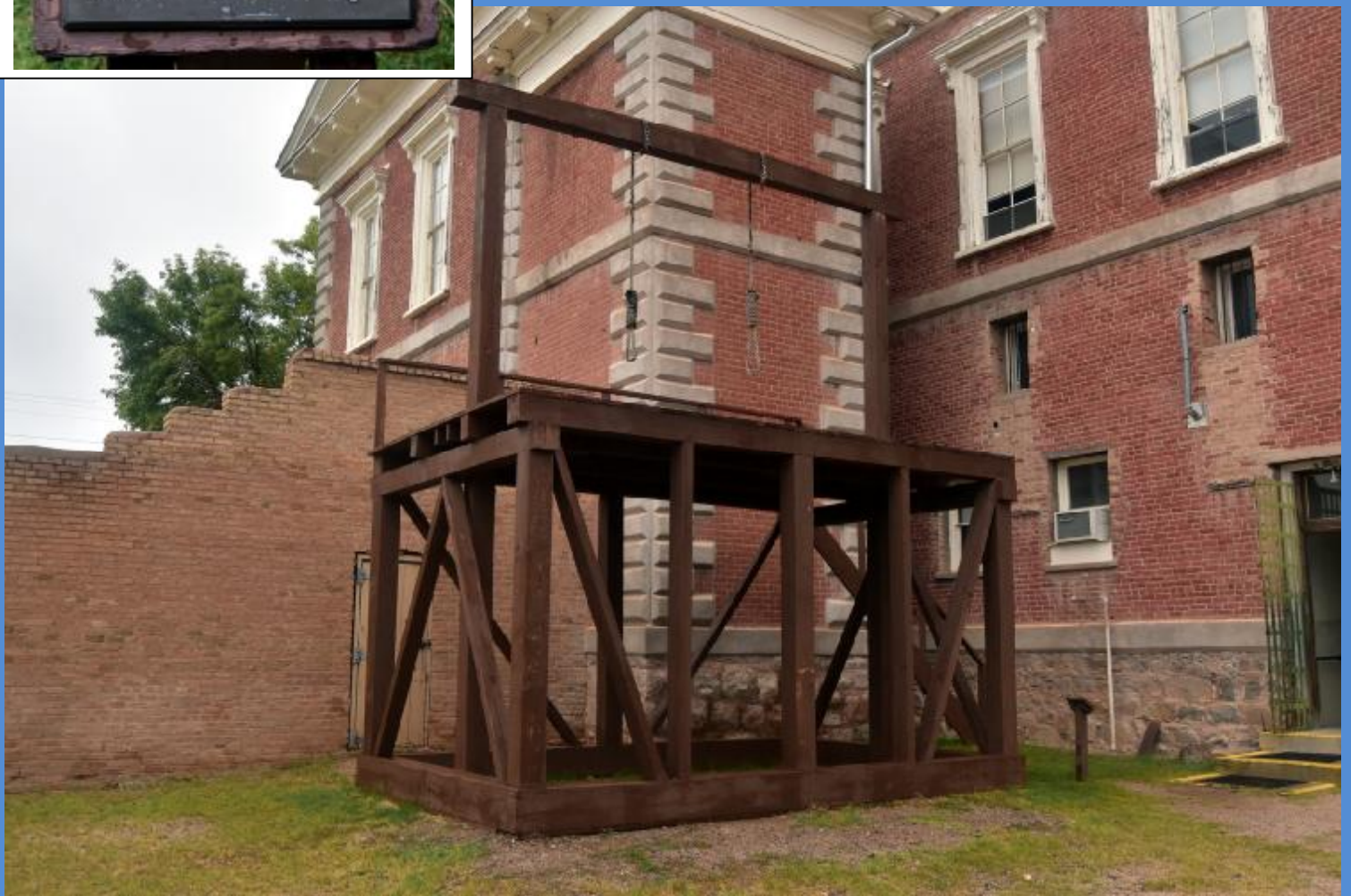


Keep this in mind. The Bird Cage Saloon was boarded up for over 30 years. When they opened it up they found much of what you see exactly as it is now. The condition of the walls, ceilings, paintings, furniture, bottles behind the bar, a 3d snapshot of the 1880's salon life. It was pretty interesting to see it that way.

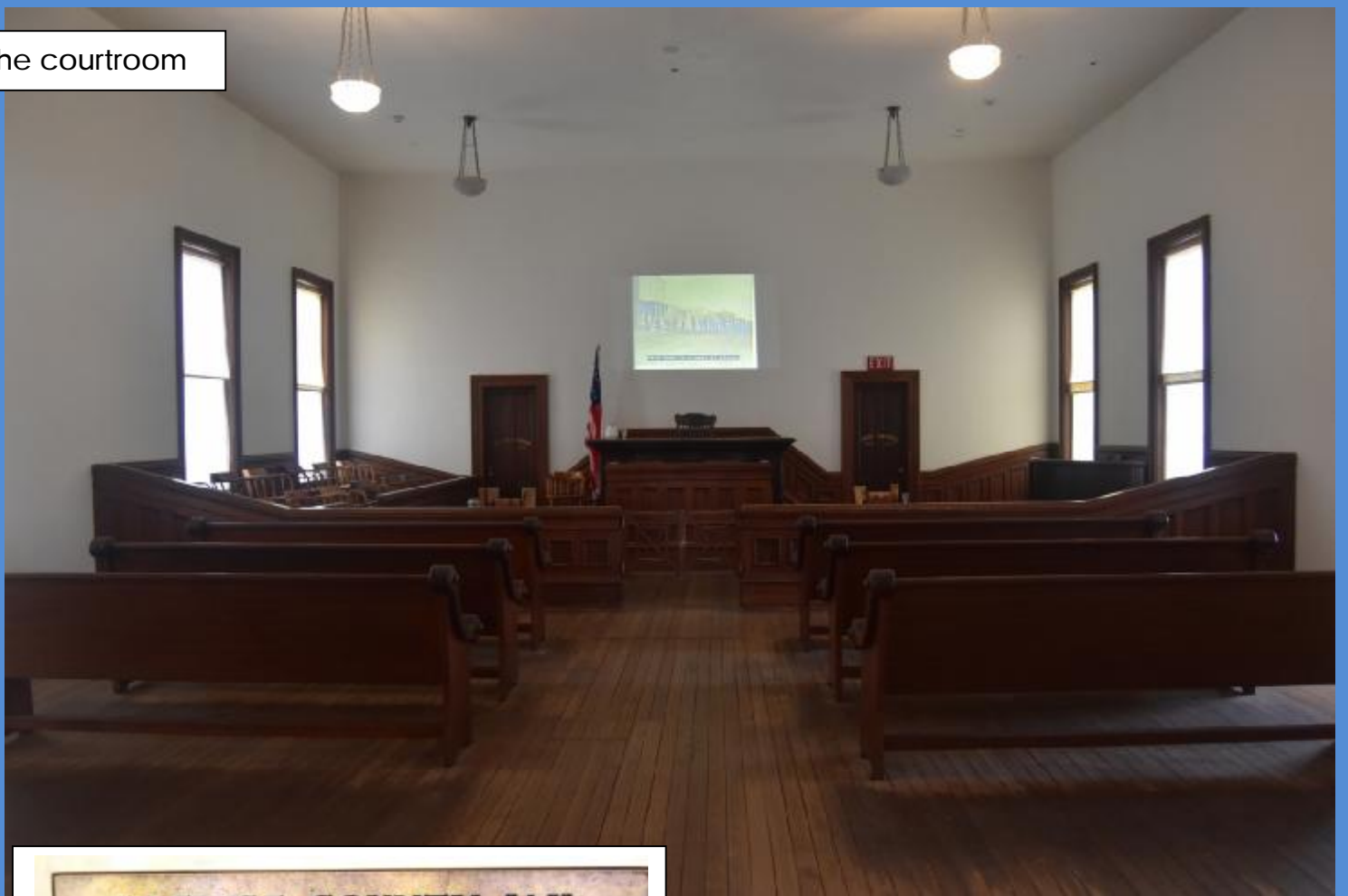


The bar where they take your money, literally. You pay for the tour here.





The courtroom



COCHISE COUNTY JAIL

This room is a 1903 addition which housed the Cochise County Jail. There was a block of 16 cells in the center of the room and a row of solid tanks along the west wall. Some prisoners did their time here while the more serious offenders stayed only briefly before being sent to the territorial prison in Yuma.

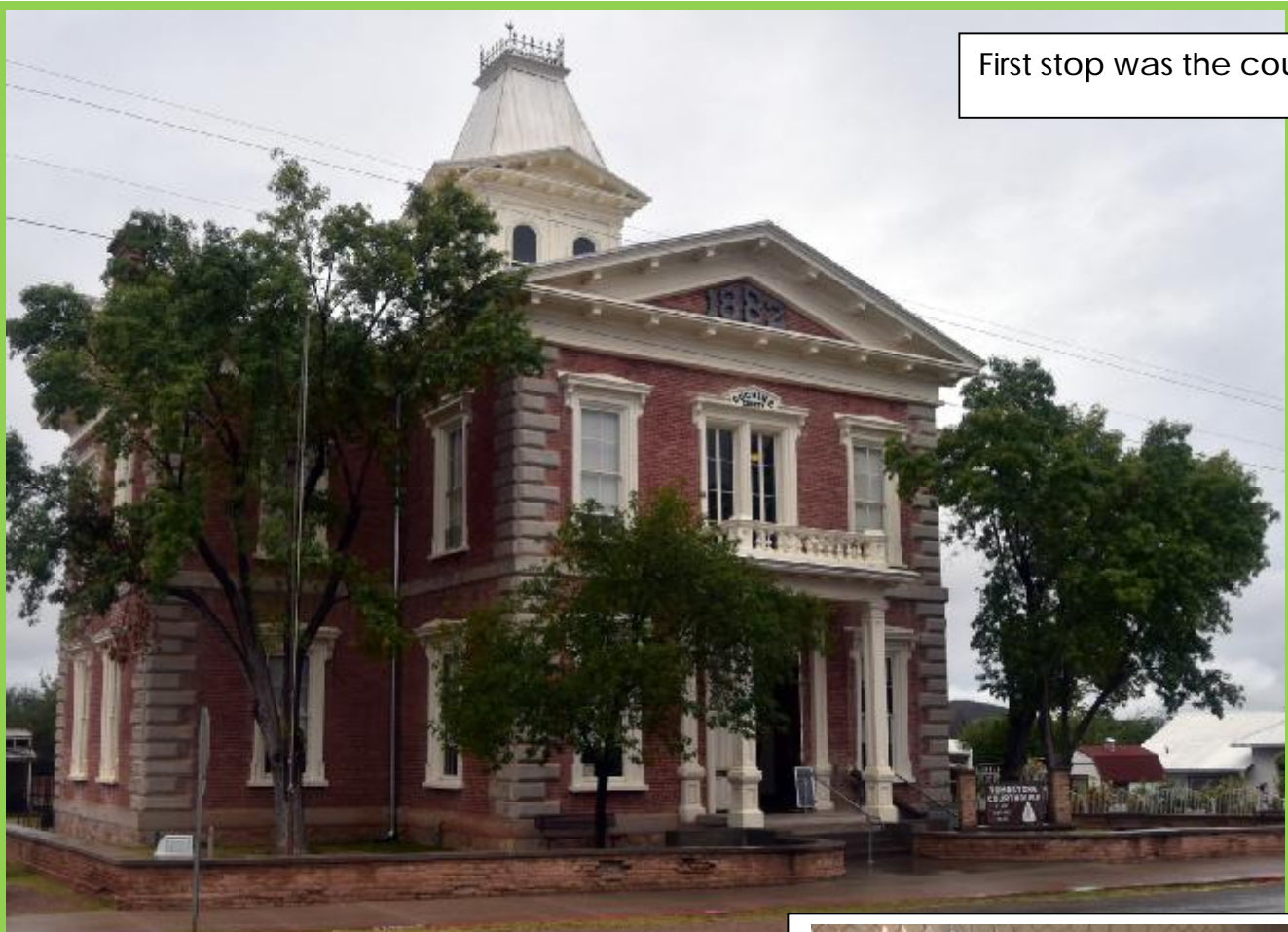
These two cell bar sections are only portions of the original 6 ft. square cells.

Right are two walls of one of the cells





First stop was the courthouse





First RV Trip - Fall 2018



Allen Street was a little empty this morning

Day 17

Thursday

October 12th

Tombstone

Arizona

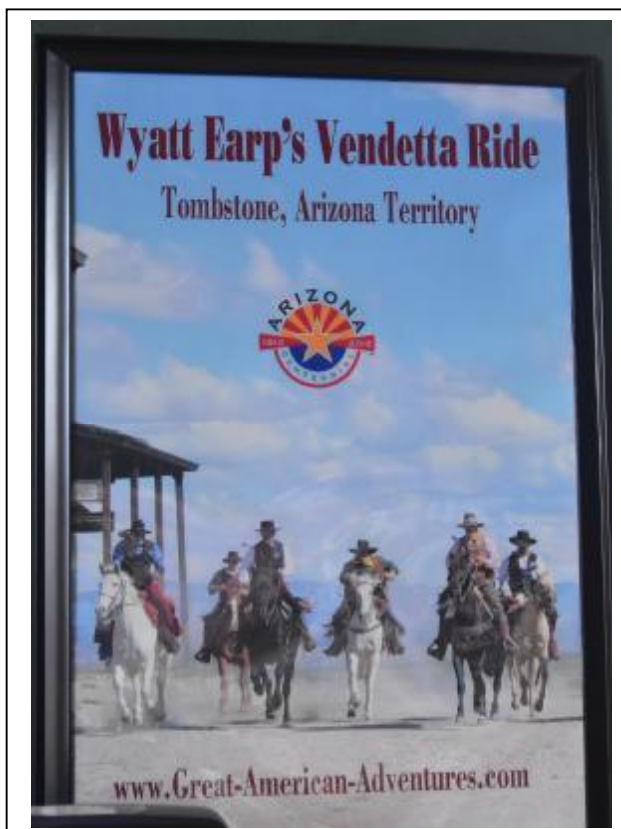
Weather

60's

Cloudy and rainy

Hello to Family & Friends

Spending the day exploring Tombstone, taking tours, watching shows, etc.

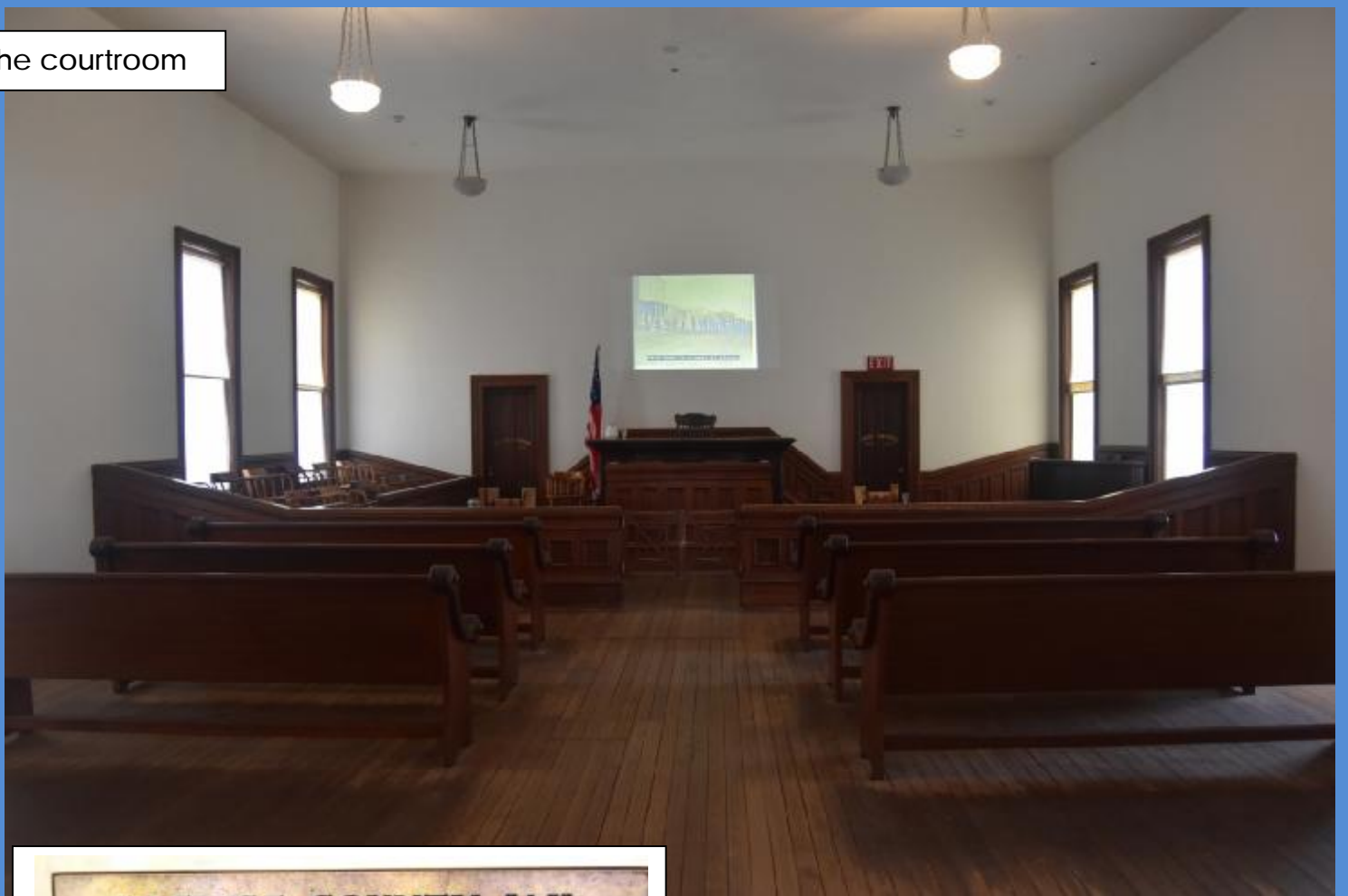


The photo to the left is the GAA poster for the Vendetta Ride about 7-8 years ago. This poster was in the visitor's center.

It has also been in magazines. Third from the left is Steve Shaw who owns, operates and plans all of the GAA horseback riding adventures I partake in.



The courtroom



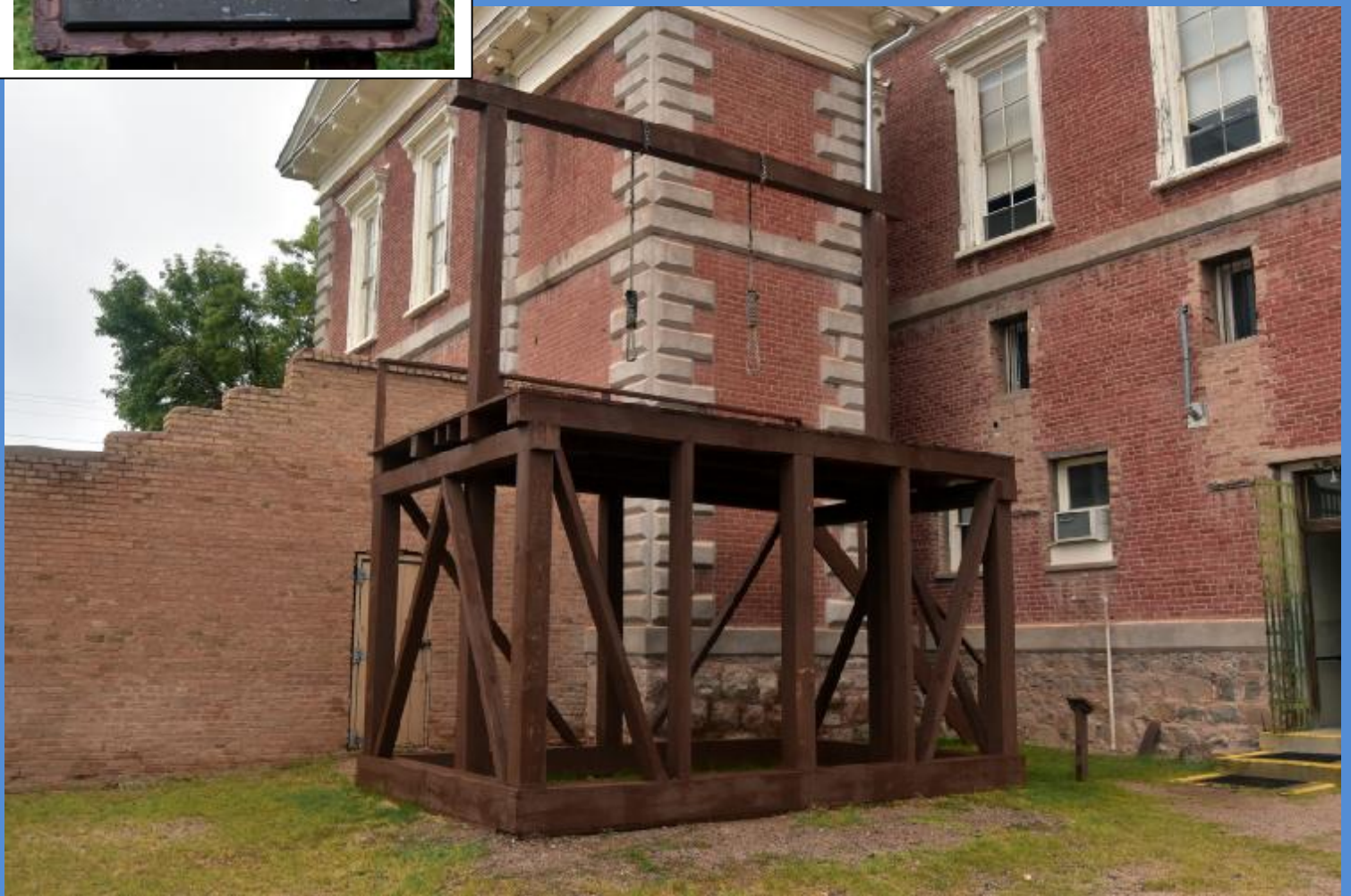
COCHISE COUNTY JAIL

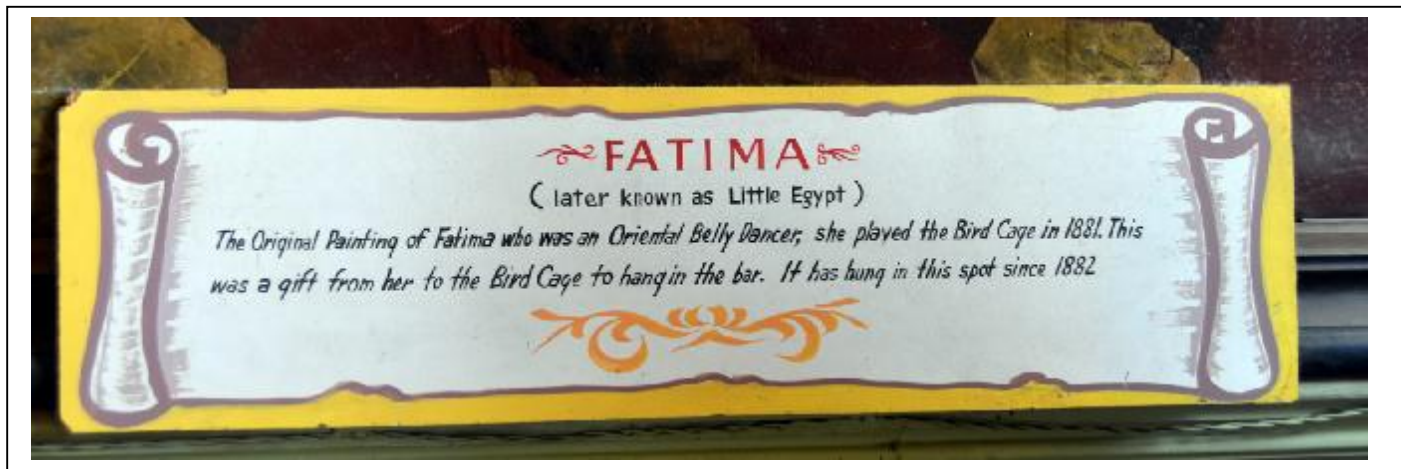
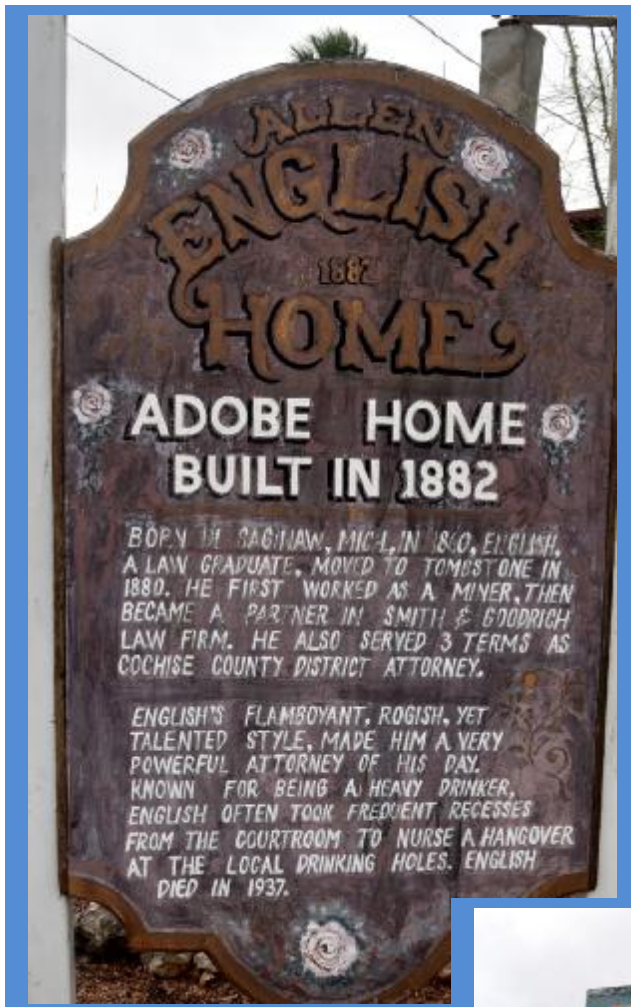
This room is a 1903 addition which housed the Cochise County Jail. There was a block of 16 cells in the center of the room and a row of solid tanks along the west wall. Some prisoners did their time here while the more serious offenders stayed only briefly before being sent to the territorial prison in Yuma.

These two cell bar sections are only portions of the original 6 ft. square cells.

Right are two walls of one of the cells



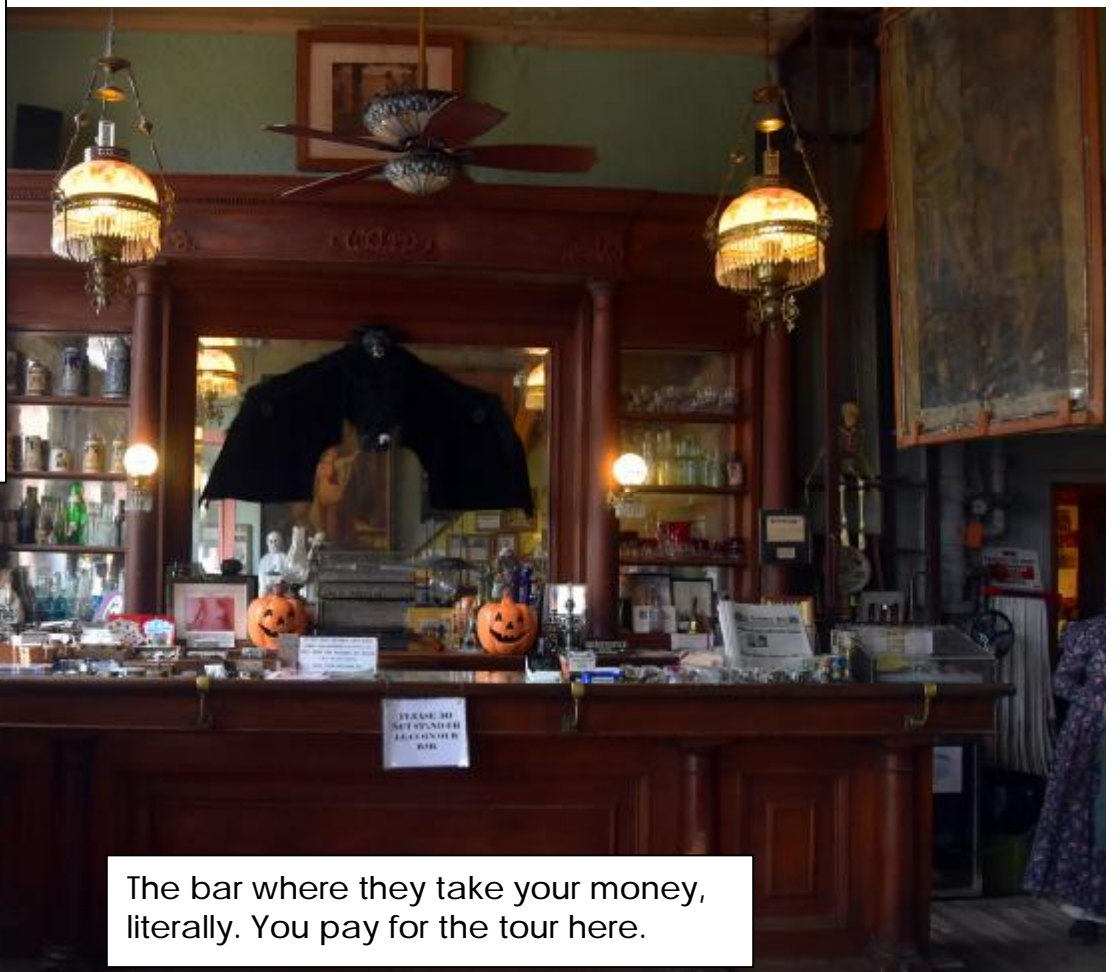




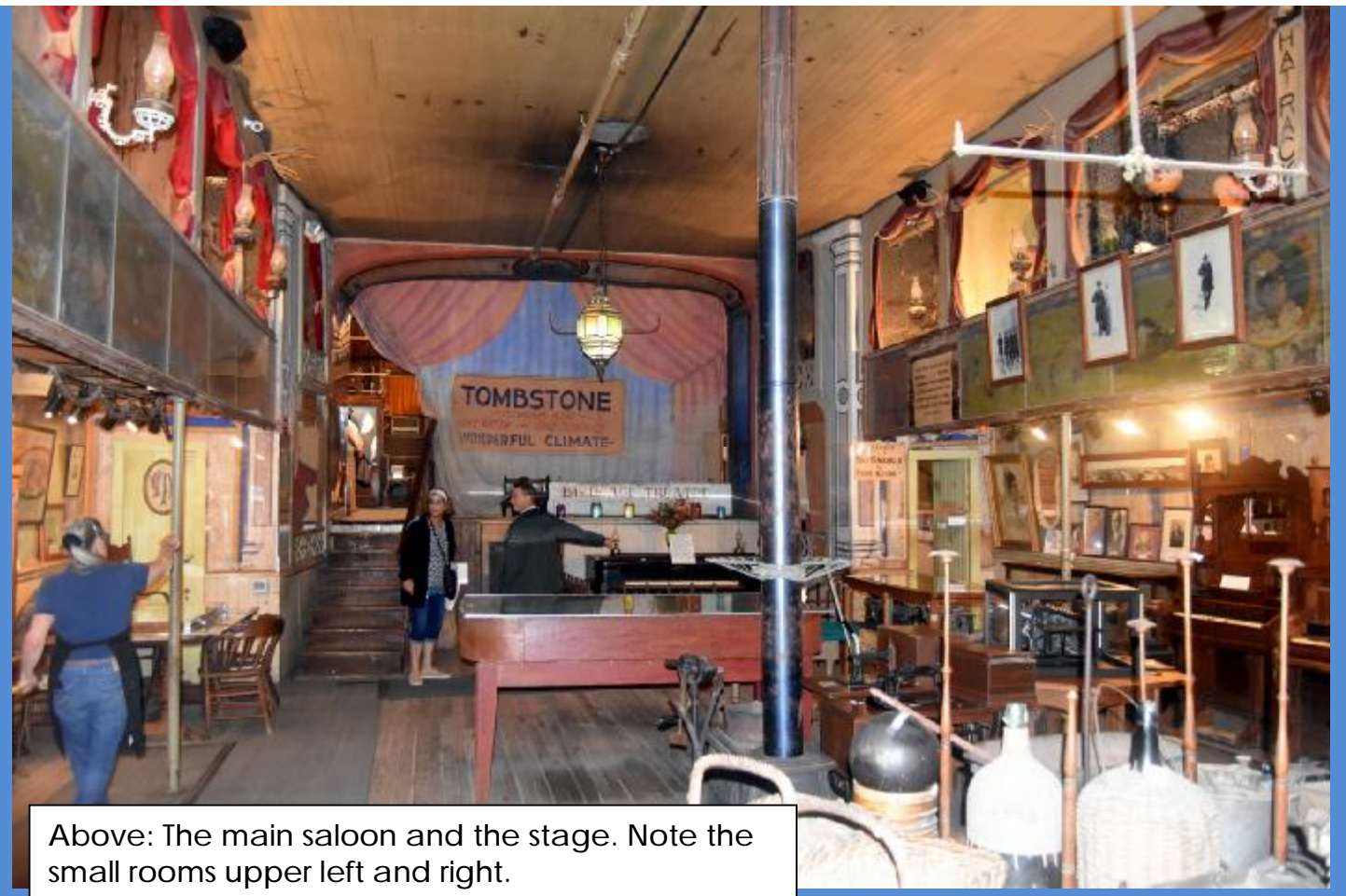
The Fatima painting is on the far wall



Keep this in mind. The Bird Cage Saloon was boarded up for over 30 years. When they opened it up they found much of what you see exactly as it is now. The condition of the walls, ceilings, paintings, furniture, bottles behind the bar, a 3d snapshot of the 1880's salon life. It was pretty interesting to see it that way.

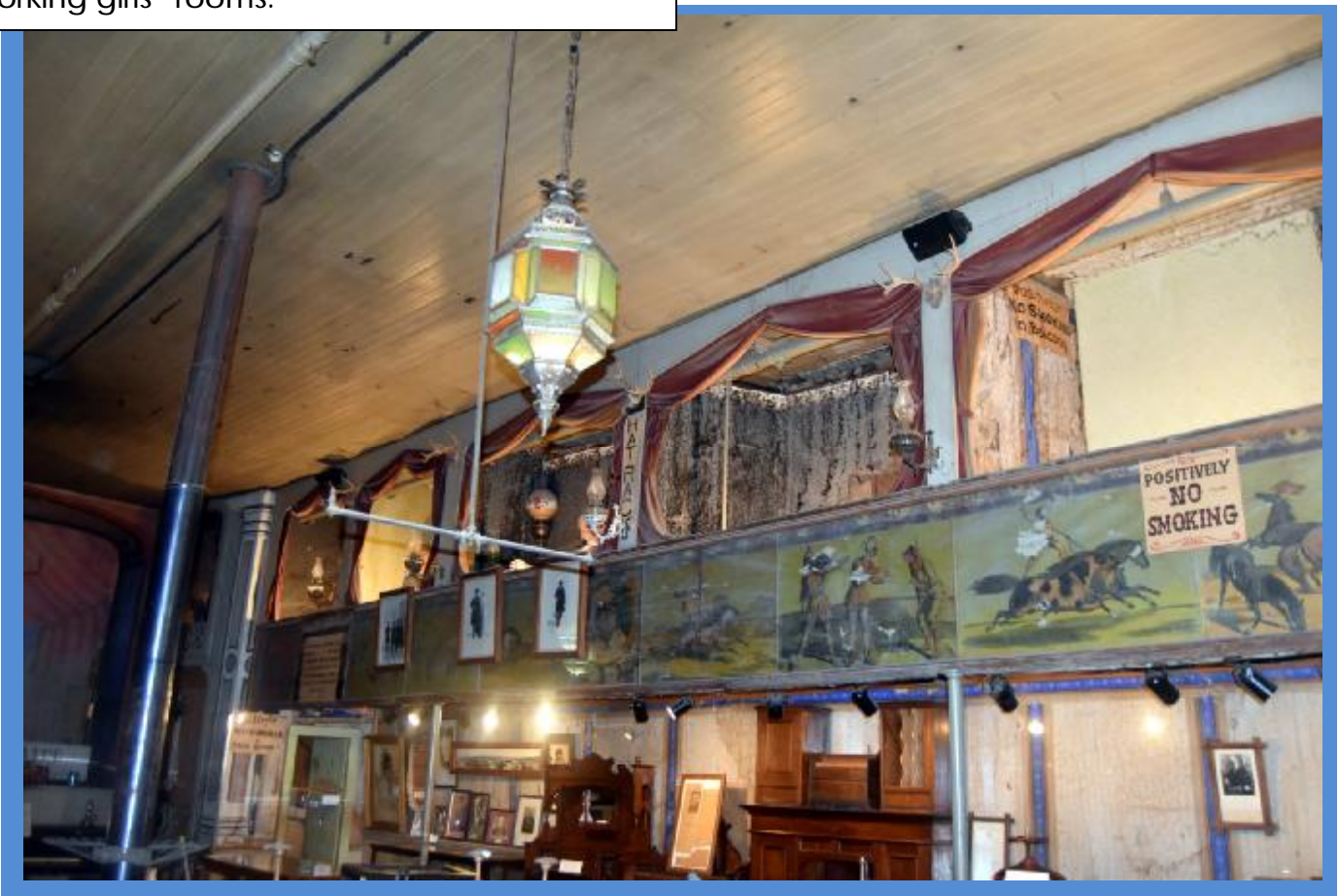


The bar where they take your money, literally. You pay for the tour here.



Above: The main saloon and the stage. Note the small rooms upper left and right.

Below and further below: The "bird cages" from whence the business gets its name. These were the "working girls" rooms.



THIS IS THE ORIGINAL FARO TABLE
WERE DOC HOLLIDAY PLAYED AND
DEALT FARO. DOC HOLLIDAY AND
JOHNNY RINGO HAD THEIR FAMOUS
DUEL BETWEEN THE FARO TABLE
AND THE GRAND PIANO.



CURLY BILL
WAS RECOGNIZED WHILE GETTING
A HAIRCUT IN THIS CHAIR. HE WAS
LATER TRACKED DOWN AND KILLED
BY WYATT EARP





THE ORIGINAL GRAND
PIANO HAS SAT ON THIS
SPOT SINCE 1881. IT
FURNISHED MUSIC FOR
THE SHOWS AND DANCES
OF THE BIRD CAGE THEATRE.
IT IS BUILT OUT OF SOLID
ROSE WOOD AND IS HAND
GRAVED. THIS PIANO WAS
THE FIRST TO ARRIVE IN
TOMBSTONE. IT WAS
SHIPPED AROUND THE
HORN OF SOUTH AMERICA
TO SAN FRANCISCO BY
BOAT AND BROUGHT FROM
THERE TO TOMBSTONE BY
MULE TRAIN. IT WAS PART
OF A FIVE PIECE BAND
THAT PLAYED THE BIRD
CAGE THEATRE FROM
1881 THROUGH 1889.

THE ORIGINAL GRAND
PIANO HAS SAT ON THIS
SPOT SINCE 1881 IT
FURNISHED MUSIC FOR
THE SHOWS AND DANCES,
IT IS BUILT OUT OF SOLID
ROSE WOOD AND IS HAND
GRAVED. THIS PIANO WAS
THE FIRST TO ARRIVE IN
TOMBSTONE. IT WAS
SHIPPED AROUND THE
HORN OF SOUTH AMERICA
TO SAN FRANCISCO BY
BOAT AND BROUGHT FROM
THERE TO TOMBSTONE BY
MULE TRAIN. IT WAS PART
OF A FIVE PIECE BAND
THAT PLAYED THE BIRD
CAGE THEATRE FROM
1881 THROUGH 1889.



NOTICE TO FEMALE EMPLOYEES

ALL GIRLS MUST TURN IN THE HOUSE'S SHARE
OF NIGHTLY RECEIPTS TO THE MADAME AND
MUST CASH IN ALL BAR-TOKENS WITH THE
HEAD BARTENDER BEFORE GOING OFF
DUTY !

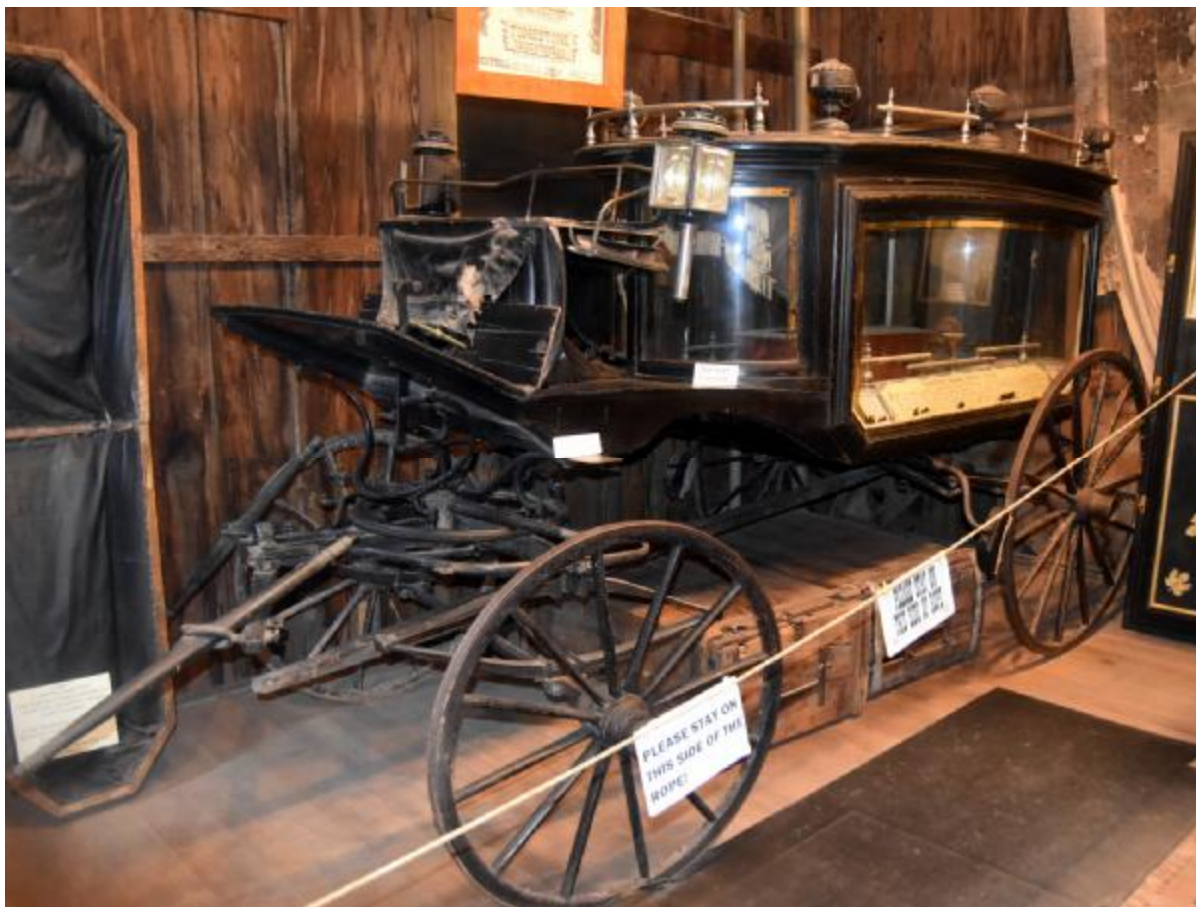
THE MANAGEMENT

This original notice was found in the basement during the cleanup.
It had been posted on the walls for all to see.
Copies of this notice may be purchased in the gift shop.

Back stage



THE BLACK MORIAH
THIS ORIGINAL BOOTHILL HEARSE IS
TRIMMED IN 24 CARROT GOLD AND
STERLING SILVER.





This is a painting of what the saloon may have looked like in its heyday. Note the “girls” on the catwalk above. Below is the actual catwalk.





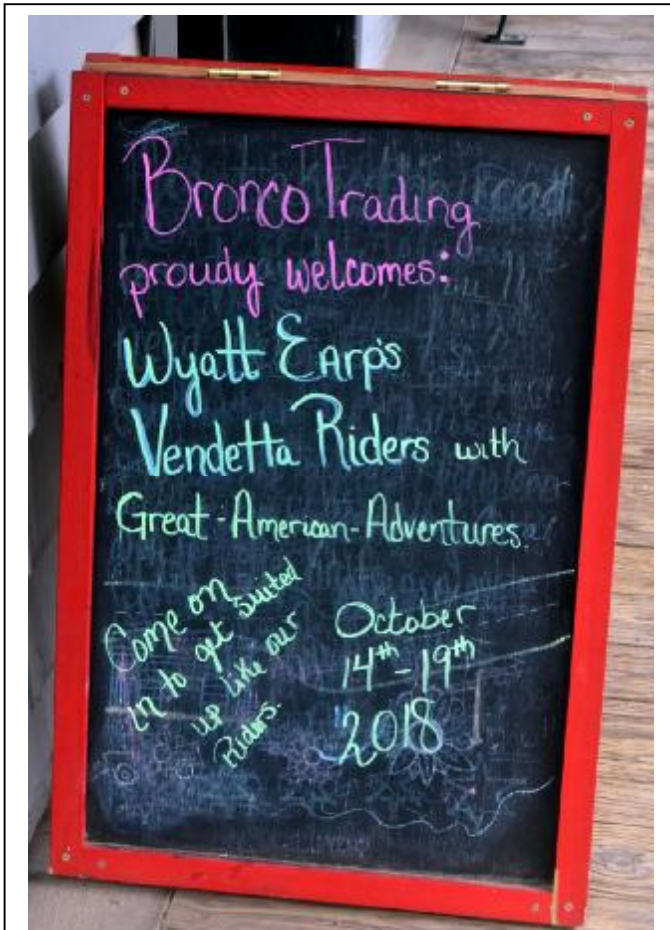
My next stop was The Gunfight Palace show. Four cowboys played out 3 famous saloon gunfight scenes.



The stage is set



Perfect timing on this shot.





1880

CAMPBELL & HATCH
BILLIARDS



Courtesy of the Arizona Historical Society/Tucson #12347

HISTORIC LOCATION
18

CAMPBELL & HATCH
SALOON AND
BILLIARD PARLOR
1881

Bob Hatch and John Campbell opened a billiard parlor in 1880. Bob Hatch was a colorful character and an amateur thespian. It was said he kept a jar of frogs on the counter as their croaking helped him predict the weather. He followed the Earps to the famous gunfight, assisted in removing the gun from dying Billy Clanton's hand, and testified at the hearing. A few months later, he was playing a game of billiards with Morgan Earp when the back window was shattered by a gunshot and Morgan fell, mortally wounded, and died within the hour. Hatch ran for sheriff in 1885, but was defeated by John Slaughter. Campbell ran several saloons in Tombstone and served as a city councilman for a number of years. The saloon and billiard parlor burned in the 1882 fire and was one of the first to rebuild. Prohibition closed all the saloons in 1914. This area deteriorated badly in the following years. In 1945 this old building was remodeled for a new business. This is one of Tombstone's historic buildings.

2009





This is a modification of a Topographical 1906 U.S. Geological Survey map. All rights reserved. The pictures from all photos of the mine were taken by Jay Peterson. Most of the photos are property of Tombstone Consolidated Mines Company. All other photos are the property of the photographer.

HISTORIC LOCATION
174

THE MINES OF TOMBSTONE

Grand Central Mine

Mines of Tombstone

Tombstone was a mining town. Everything that happened here happened because of the lure of the silver and gold found by Ed Schieffelin in the hills of Tombstone in 1877. And so they came, the prospectors, laborers, miners, lawmen, "shady ladies", gamblers and those who hoped to prosper from the ones that "struck it rich". Thirty nine million dollars in ore were extracted from the mines in the 1880's until the 1930's. The area was enormously rich in silver and gold and much of the ore was close to the surface. This made early mining ventures easy if you consider that the labor was supplied by the backs of young strong men and the major tool for excavation was a shovel. But the lack of a plentiful water supply was a problem. Mills were built on the San Pedro River, 10 miles from Tombstone. Ore was hauled in wagons pulled by 20 team horses or mules over steep and rugged terrain. The water problem seemed to be solved when water was struck in the Sulphur Mine at 520 feet. But the water that seemed a savior proved to be the mines executioner. The same water table was soon encountered in all the other mines. In 1883, gigantic Cornish style pumps were installed to pump the water from the mines at the Contention and the Grand Central Mines. In 1886, the pumps at the Grand Central burned leaving only the pumps at the Contention to handle all the water. They proved inadequate, forcing the suspension of all mining below the water table. From 1898-1901 mining was at low ebb. In 1901 the Consolidated Mining Company was formed, a four compartment shaft was sunk and mills were built. The Contention, Empire, Lucky Cross, Silver Thread, Toughnut, West Side and Grand Central were reconditioned. By 1906 the Boom shaft had reached 1003 ft. level and water was being pumped at the rate of 3000 gallons per minute. Approximately 3,700,000 gallons were pumped on a daily basis. In 1909 water again dealt mining a serious blow. Defective fuel for the boilers caused the pumps on the 1000 ft. level to seize and stop. Sinking pumps failed to handle the water and the overtaxed boilers ruptured, stopping all pumping. New compressors and boilers solved the problem. But the cost of defeating the water coupled with the falling price of silver and insufficient high quality ore bodies made mining economically unfeasible. In 1911, all pumping was stopped and the 600, 700, 800, and 1000 foot levels of the Boom shaft were allowed to flood. This was the last hurrah for mining in Tombstone. While mining continued for a number of years it never reached the production levels of the early years.

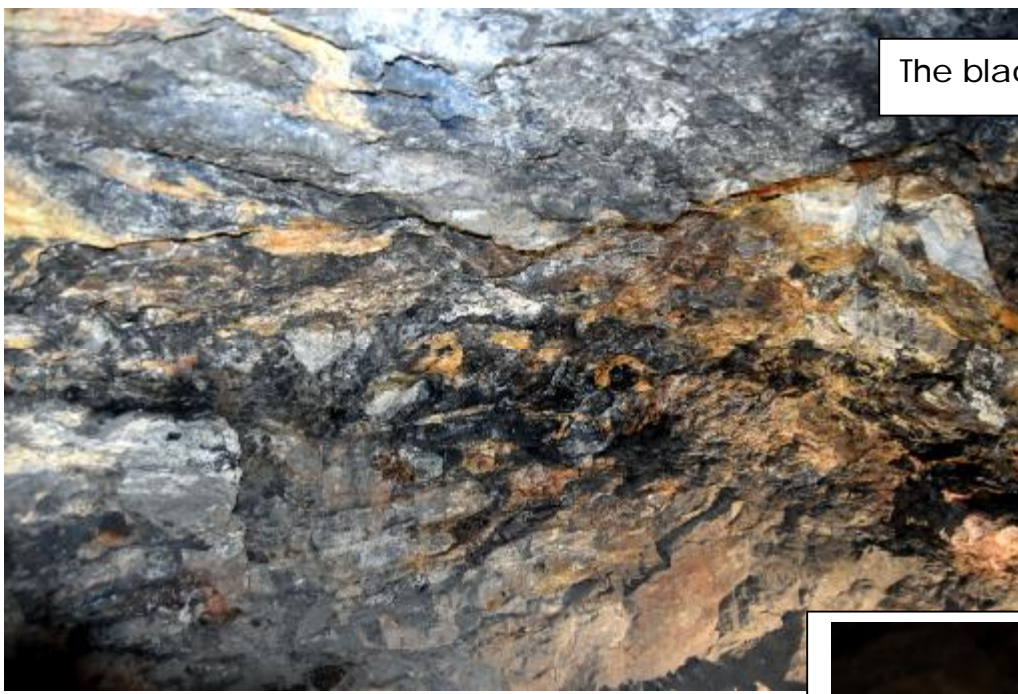
2007



Left is the first entrance that Ed Scheifflien made to start mining this claim.

Below: The tunnels run through the rock like holes in Swiss cheese. They followed the veins of silver wherever they went.

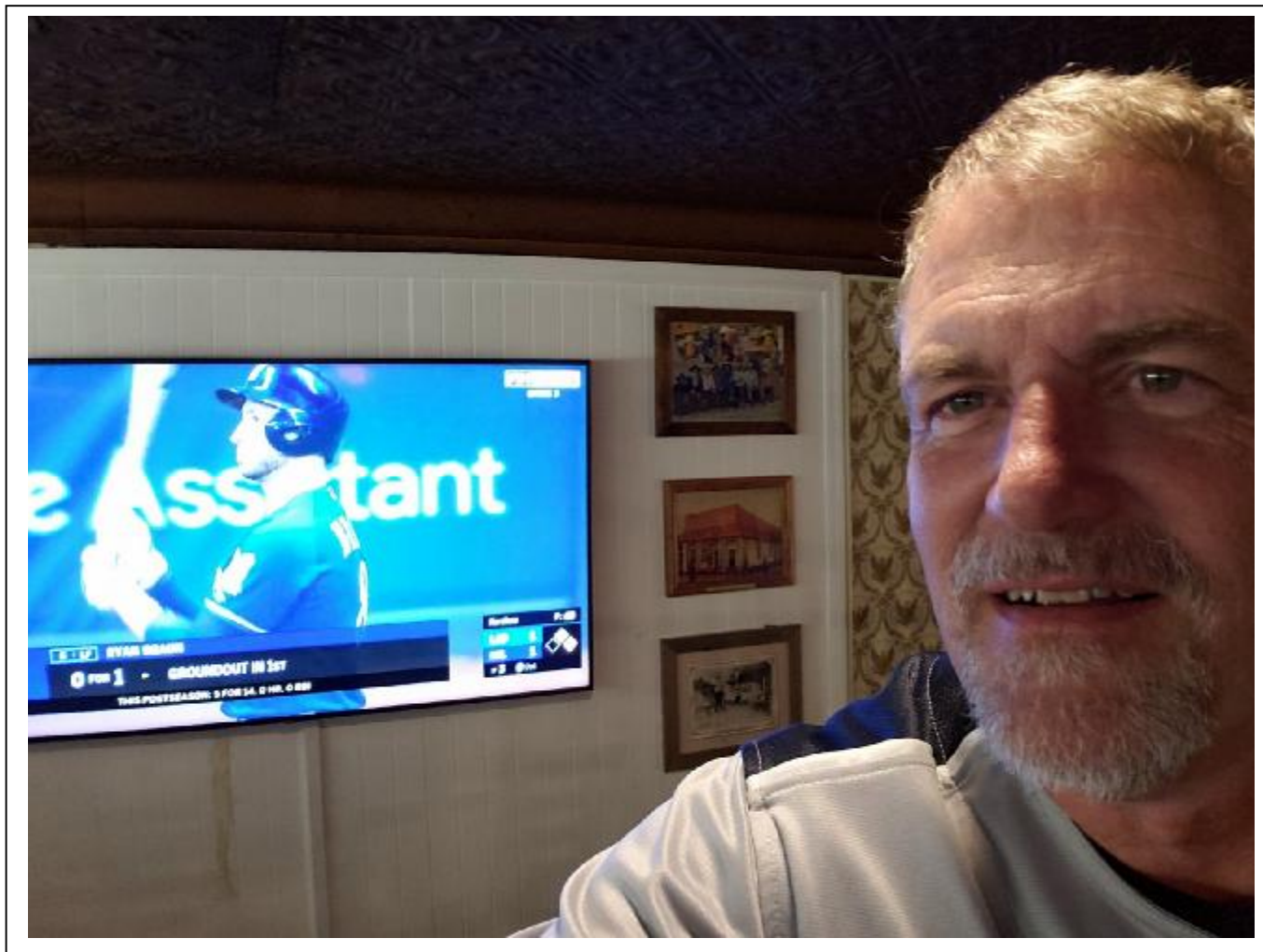




The black rock is the silver ore

Very interesting mine tour. Our guide, Robert, was extremely knowledgeable and had been in this mine for 16 years.





It's just one of those things.... Wore my Brewer jersey all day and went to the Crystal Palace to watch the Brewer game. It was 5-1 in the 7th when I decided to head back to the RV. I had purchased some additional cowboy clothing and when I got back I put the game on my phone then took the Brewer shirt off to try out some new shirts. The Dodgers started making their comeback. Jeffress was down to a full count with bases loaded and 2 outs. I suddenly realized I was not wearing the Brewer jersey. I quickly put it on and Jeffress struck out Puig (whatever), then went on to win the game. I will try and make sure I wear the jersey for each game.

Fun day. Lots of exercise.

Free burgers from George Webb!!!! Morgan was not even born the last time George Webb gave away free burgers in the spring of 198, and Kali had just turned 1.

Goodnight